

MEETINGS
MADE EASY

BRUSSELS

FEEL THE DIFFERENCE

www.radissonblu.com/en/royalhotel-brussels



WELCOME

The Radisson Blu Royal Hotel is an eight-storey glass-domed gem located in the very heart of Brussels. It combines a unique postmodernist art-déco inspired architecture with committed service to deliver extraordinary hospitality.

Our outstanding venue is only a few minutes away from the world famous Grand Place and Royal Galleries.

In addition, the hotel provides very easy access to Brussels Central railway station with direct connections to the airport, the city's subway and Europe's main rail lines (Thalys, Eurostar, ICE), making it a convenient base to stay and meet.



MEETINGS & EVENTS

When beautiful spaces meet exceptional service.

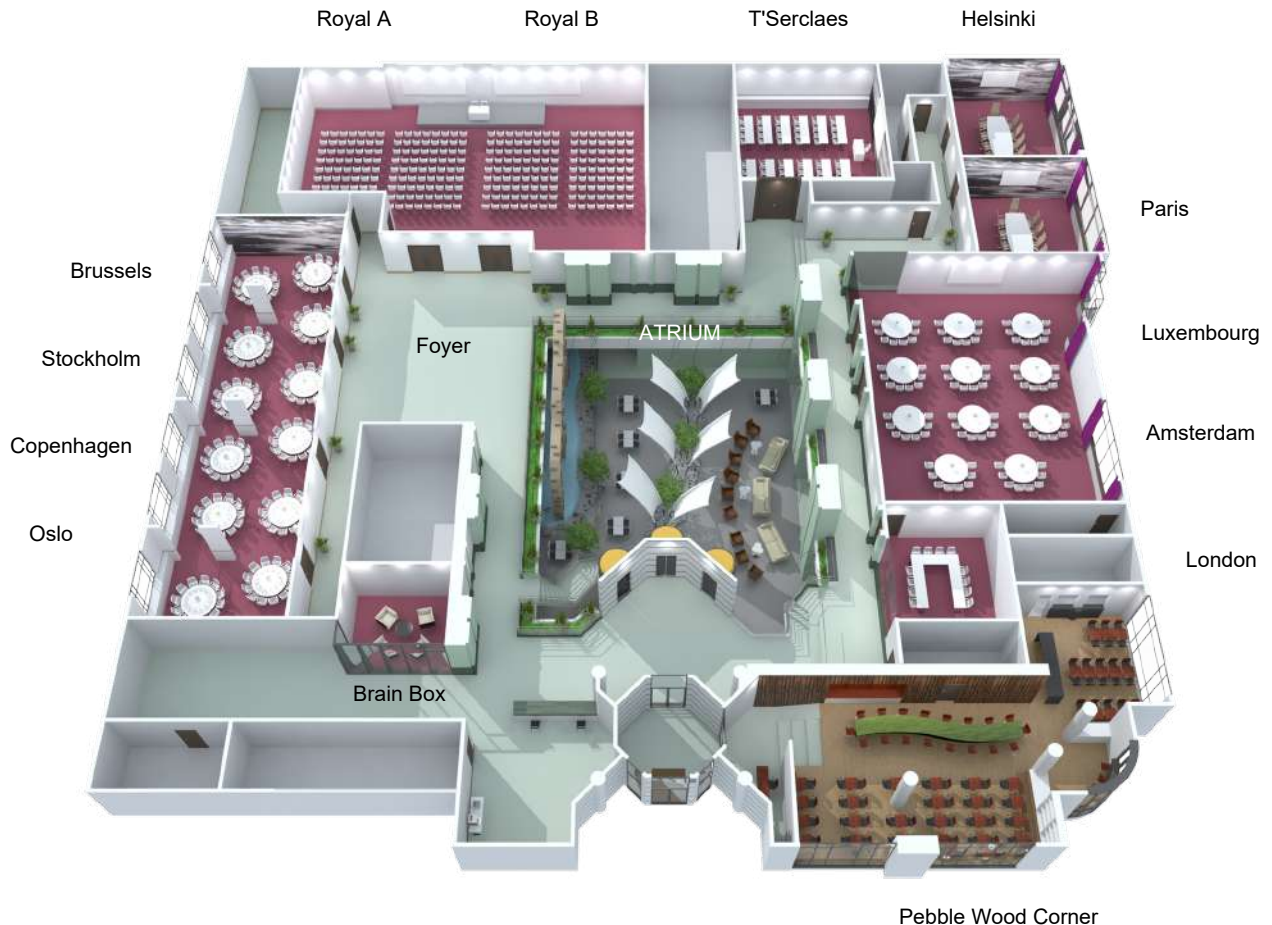
With a total of 18 meeting rooms, mainly located on the first floor and overlooking the luminous atrium, the Radisson Blu Royal Hotel, Brussels invigorates delegates with a burst of natural daylight.

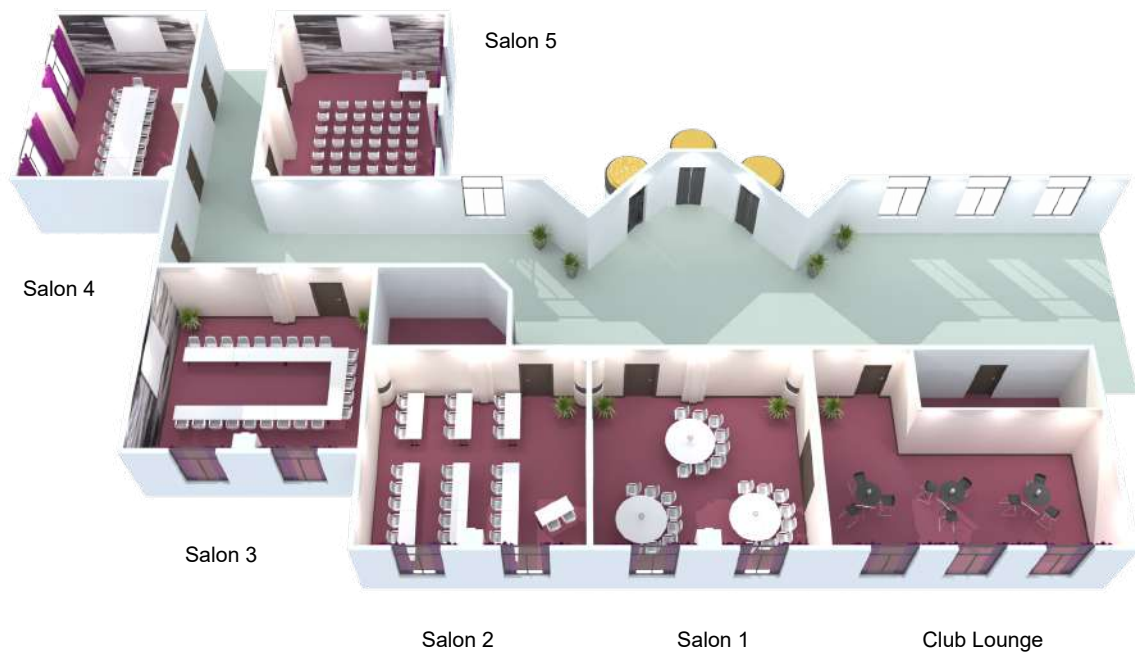
The hotel accommodates a variety of events, including banquets for up to 300 guests, conferences for 420 delegates and receptions for 500 guests.

Comprehensive state-of-the-art audio-visual equipment and expert staff provide the highest level of technology and certified service. Everything you need to plan successful meetings, from start to finish.

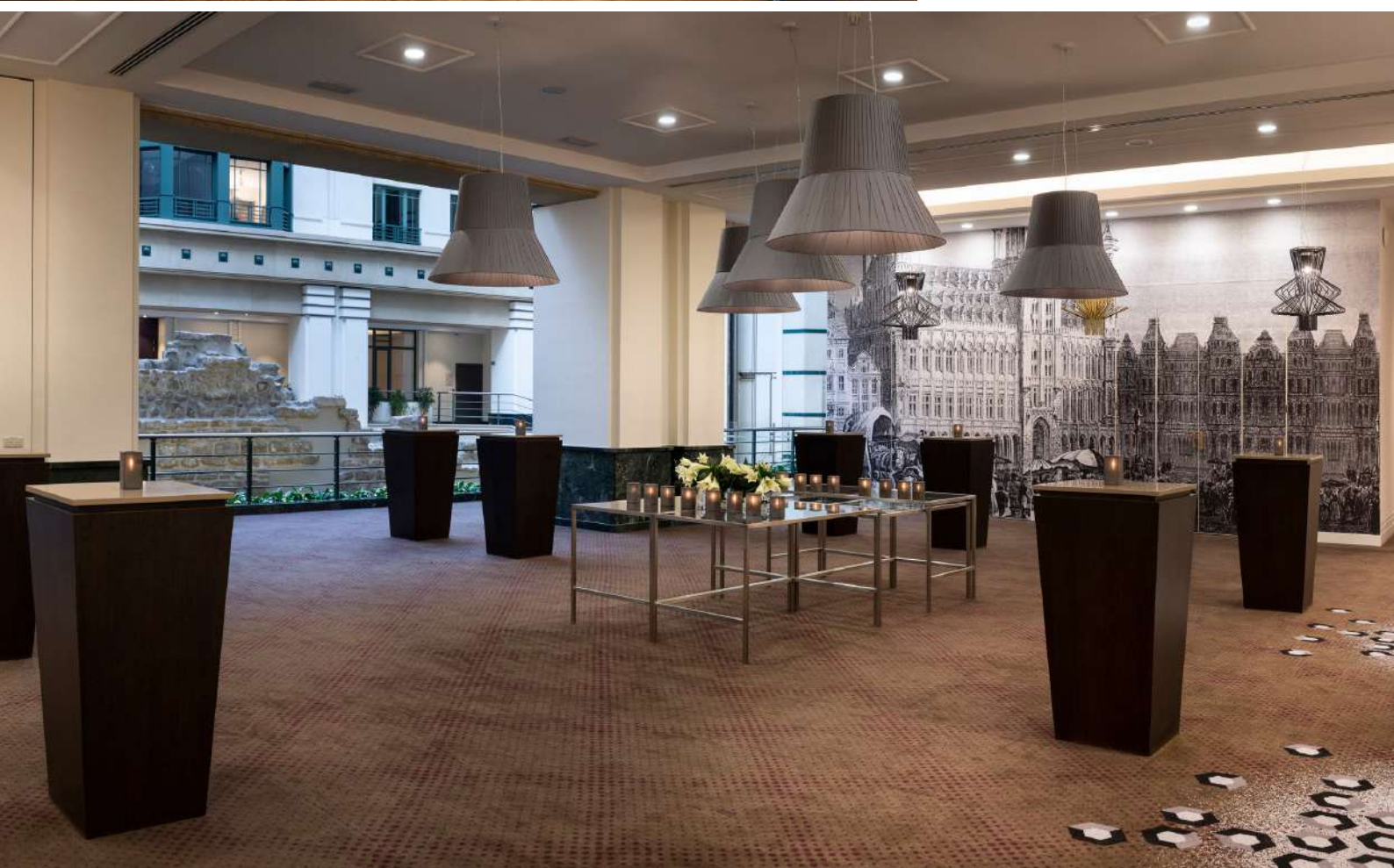
A dedicated team of event professionals combined with outstanding facilities and environmental commitment make the Radisson Blu Royal Hotel the perfect venue for meetings and events in Brussels.

Finally, our company standard 100% Satisfaction Guarantee also ensures the smooth, successful operation of any event.





MEETING ROOM CAPACITY												
MEETING ROOM	area in m ²	Area in sq. ft.	Cabaret	Hollow square	Banquet	Classroom	U-shape	Boardroom	Theatre	Cocktail	ceiling height (m)	dimensions
1 ST FLOOR												
Royal A	139	1496	48	56	120	81	42	38	130	120	3,5	10,3 x 11
Royal B	156	1679	72	72	132	108	54	54	160	150	3,5	10,2 x 15,2
Royal	295	3174	160	96	300	246	72	94	420	350	3,5	
Foyer	125	1349			90					250	3,8	
Foyer & Balcony					170					330	3,8	
T'Serclaes	75	807	32	48	60	48	32	30	90	60	3,5	8,3 x 9
Brussels	32	311	16	22	24	12	14	14	20	20	3,5	4,8 x 6,7
Oslo	30	323	16	22	24	12	14	14	20	20	3,5	4,5 x 6,7
Stockholm	49	527	24	32	48	27	24	24	50	40	3,5	7,3 x 6,7
Copenhagen	49	527	24	32	48	27	24	24	50	40	3,5	7,3 x 6,7
Brussels + Oslo + Stockholm + Copenhagen	160				144					200	3,5	
London	27	291	8	18	12	15	15	14	26	18	3,2	6 x 4,5
Amsterdam	69	742	32	36	70	42	26	23	75	70	3,2	7,6 x 9
Luxembourg	77	829	24	34	60	36	23	20	64	80	3,2	6,4 x 12
Amsterdam & Luxembourg	143	1539	72	56	144	81	51	46	140	200	3,2	
Paris	44	473							14		3,2	6 x 7,3
Helsinki	44	473							14		3,2	7 x 7,3
PebbleWood Corner	200	2153			150					200	3,3	
7 TH FLOOR												
Salon 1	51	561	24	30	48	27	25	20	50	50	2,3	7 x 7,3
Salon 2	51	561	24	30	48	27	25	20	50	50	2,3	7 x 7,3
Salon 3	51	561	24	30	48	27	25	20	50	50	2,3	7 x 7,3
Salon 4	51	561	24	30	48	27	25	20	50	55	2,3	7,5 x 6,5
Salon 5	51	561	24	30	48	27	25	20	50	55	2,3	7,5 x 6,6
Club Lounge	57	613					15	26	40	35	2,3	
GROUND FLOOR												
Atrium Lounge	35				40					50		
Atrium Restaurant					50							
Atrium Restaurant & Lounge					90					100		
Atrium Restaurant & Lobby Bar										180		
Bar Dessiné										40		



ROOMS & SUITES

Relax in comfort and style. With 282 elegant rooms and suites starting at 26 m2 and very spacious Suites ranging up to 156 m2, all rooms offer thoughtful amenities to guarantee a stress-free and restful stay.

All guests benefit from free Wi-Fi, in-room tea and coffee facilities and access to a selection of newspapers and magazines via the Radisson Blu One Touch mobile app. In the superior room categories, guests will enjoy a range of extra amenities such as in-room bathrobes and slippers, coffee machine, mini-bar with complimentary items and parking included with the reservation. Access to an executive lounge is also included for higher room categories.

RESTAURANTS

Sample the very best fresh, local food in an upbeat atmosphere when dining at Brussels' most unique restaurants.

Under the hotel's impressive and luminous glass-dome, the Atrium Restaurant & Lounge serves seasonal Belgian brasserie cuisine as well as a smart selection of international dishes. The original 12th century Romanesque city wall and little stream make this place a refreshing and alternative venue. Ideal for business groups, the Atrium can be privatized for lunch, cocktail or dinner.

The PebbleWood Corner is another unique event space, fitted with a semi-open kitchen and 200m2 of natural vibes. It lends itself perfectly for group lunches, dinners or themed walking dinners

Also within the hotel, the 2 Michelin starred, Gault & Millau awarded Sea Grill Restaurant pays tribute to the majesty of the oceans with outstanding seafood creations in a trendy, premium atmosphere.

FACILITIES

Located on the hotel's top floor, our Fitness club features the latest exercise equipment. Guests can also book a massage or unwind in the sauna. A business centre, underground parking and 24/7 room service are also available at the property.

Continuing the excellent customer service, the hotel's Clefs d'Or concierge will be delighted to help guests choosing the best city walks, the finest restaurants and tell them everything they need to know about Brussels.

ARRIVAL

BY PLANE: Only 14 kms away from the hotel, it can easily be accessed either by taxi or by Airport Express train to reach Brussels Central Station which is only a few hundred meters from the hotel.

BY TRAIN: Brussels Central can be reached by foot. This railway station runs both international and national trains and connects directly to Brussels Midi Station - the terminal for Eurostar and Thalys.

A stone's throw away from the hotel, the metro station "De Brouckère" connects to Midi Station as well as the whole underground system of Brussels.

BY CAR: The Radisson Blu Royal can easily be accessed by car. Just follow the signs to the city center and drive towards "De Brouckère" or Cathédrale St. Michel et Gudule, where a side road turns into Rue du Fossé aux Loups.



RADISSON BLU ROYAL HOTEL, BRUSSELS

47 rue du Fossé-aux-Loups
1000 Brussels, Belgium

T: +32 (0)2 21928 28 F: +32 (0)2 219 62 62
www.radissonblu.com/en/royalhotel-brussels

GPS COORDINATES:
50°50'59" N, 4°21' 23" E

groupequest.brussels@radissonblu.com